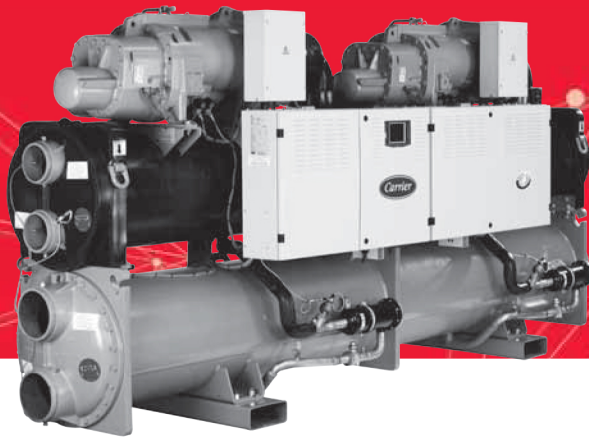


WATER-COOLED SCREW CHILLERS WATER-SOURCED SCREW HEAT PUMPS



Low energy consumption
High reliability
Easy and fast installation
Low operating sound levels
Environmental care

30XWH/30XWHP

Nominal heating capacity 317-1989 kW
Nominal cooling capacity 273-1756 kW

The 30XWH/30XWHP heat-pumps are the premium solution for industrial and commercial applications where installers, consultants and building owners require optimal performances and maximum quality.

The 30XWH/30XWHP heat-pumps are designed to meet current and future requirements in terms of energy efficiency, flexibility of use and compactness. They use the most reliable technologies available today:

- Twin-rotor screw compressors with a variable capacity valve
- Refrigerant R134a
- Touch Pilot control system
- Flooded heat exchangers that are mechanically cleanable

To meet to all environmental and economic requirements, the 30XWH/30XWHP is available in two efficiency classes:

- Entry-level efficiency 30XWH units that offer an optimised balance of technical and economical aspects,
- Premium-efficiency 30XWHP units that offer unequalled energy efficiency to satisfy the most stringent demands of building owners wanting to reduce operating costs to the minimum.

The 30XW Aquaforce range is also split into two versions:

- 30XW for air conditioning and refrigeration applications
- 30XWH for heating applications

As standard, the unit can provide an evaporator leaving temperature down to 3,3°C (-12°C optional), and when operating as a heat pump, it can deliver up to 50°C (63°C optional) on the condenser side.

AQUAFORCE

HEATING



CARRIER participates in the ECP programme for LCP/HP
Check ongoing validity of certificate:
www.eurovent-certification.com